

LA FILM PERMITS

THE FILMMAKER'S
HANDBOOK

 wrapbook

LA FILM PERMITS

THE FILMMAKER'S HANDBOOK

EDITED BY ADAM DARRAGH AND A.J. UNITAS
WRAPBOOK

DESIGNED BY MOBEEN MUZZAMMIL

© 2020 Wrapbook Inc.

All rights reserved. No part of this publication text may be uploaded or posted
online without the prior written permission of the publisher.
For permission requests, reach out to success@wrapbook.com.



What is Wrapbook?

Whether you've shot on location in LA a handful of times or are about to for the very first time, navigating film permits can be a little bit tricky. That's why we put together this guide.

At Wrapbook, we're all about empowering producers, removing legal complexity, paperwork, and informational barriers that hinder creativity.

Our software provides a one-stop production management system, where producers can onboard cast and crew, collect timecards and expenses, and run payroll compliantly. Along with our [film insurance packages](#), you can now go from idea to finished project faster than ever.

CHECK IT OUT

Table of Contents

Introduction	6
Los Angeles Permits	7
General Requirements	8
Specific Insurance Requirements by Location	12
Neighborhood Rules	14
LA School Districts	26
LA Airports	28
LA Beaches	30
How Much Does A Film Permit Cost	35
Burbank Film Permits	37
Beverly Hills Film Permits	43
State and National: Beaches, Parks, and Forests	51
Next Steps	68



 wrapbook



Introduction

Los Angeles is *big*.

Thankfully, Los Angeles makes filming easy with FilmLA, Los Angeles' official film permitting office. When you work with FilmLA, you receive a personal FilmLA Production Coordinator who will walk you through the ins and outs of permitting not only in the City and County of Los Angeles, but also the 14 different municipalities, 7 school districts, and many iconic beaches and neighborhoods that fall under FilmLA's umbrella.

When 18 million people live in the same metro area, logistics can get complicated. Maybe you've found the perfect beach to film at sunset. You'll need to know if the beach is even open for sunset, where you can park, as well as how many cast and crew are allowed on the beach in the first place.

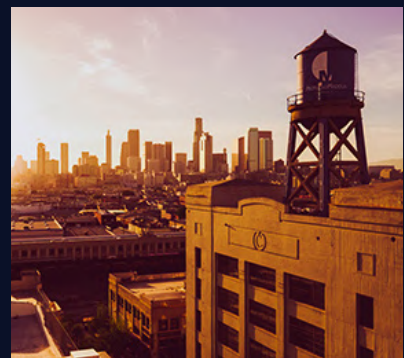
Furthermore, as you go through the permitting process you may find that in addition to a permit for the beach, you may need to get a permit for the municipality, as well as the approval of any City Departments (such as the Department of Public Works) that are affected.

Your personal FilmLA Production Coordinator will walk you smoothly through all of these steps, and good communication with your insurance broker will ensure you match any insurance requirements these locations have.

However, as you dream about "the look" of your new production, here is a primer of the sorts of requirements each of these locations have.

Los Angeles Permits

The City of Los Angeles is surrounded by the County of Los Angeles, as well as 14 different municipalities, all with their different characteristics. FilmLA provides a centralized office where you can file for permits and pay permitting fees, as well as coordinate with any City Departments (like the Department of Water and Power or Sheriff's Department) affected.



GENERAL REQUIREMENTS

For the most part, all municipalities require:



MINIMUM INSURANCE REQUIREMENTS

General Liability of 1M occurrence / 1M aggregate , Automobile Liability of 1M/1M (if using autos), and proof of Workers Compensation. General and Auto Liabilities require a Waiver of Subrogation. Still photo shoots require General Liability of \$500,000, rather than \$1,000,000.



FILMING SURVEY

A community filming survey may be required at any time, but especially for filming outside of the hours of 7am-10pm, as well as hazardous activities like chase scenes, gunfire, and certain stunts. FilmLA will provide a survey form and a map or list of addresses, but it is the production company is responsible for surveying acted residents and businesses.



NEIGHBORHOOD NOTIFICATION

All Los Angeles film permits require neighborhood notification, which is coordinated through FilmLA (although filmmakers are encouraged to personally notify affected residents as well). Certain permitted activities require wider notifications than others.



FILMLA MONITORS & CITY PERSONNEL

If you are filming on City property, in frequently filmed areas, or engaging in complicated filming activities, you will likely be assigned a FilmLA Monitor. Other production activities may require the presence of Law Enforcement, Fire Department, or other municipal personnel.



DEPLOYMENT AND PROMPT REMOVAL OF SIGNAGE

All municipalities require effective signage to indicate production activities, as well as prompt removal of that signage once production is completed (some municipalities even levy fines if they're left up too long!)



INSURANCE REQUIREMENTS

General Liability of 1M occurrence / 1M aggregate, Automobile Liability of 1M/1M (if using autos), and proof of Workers Compensation. General and Auto Liabilities require a Waiver of Subrogation.



NOTIFICATIONS

Notifications must occur minimum two days ahead of the first day of shooting (and permits must be filed with FilmLA minimum three days ahead).



HOURS OF OPERATION

Neighborhoods are available from 7am-10pm. After-hours hours filming may be available after conducting a filming survey, though some communities prohibit filming outside of these hours.



CAST/CREW PARKING

Cast/Crew are generally prohibited from parking on city streets and require arranging either transport or parking on private property.



PRODUCTION EQUIPMENT PARKING

Essential production equipment generally required to park only on one side of the street. In certain communities, equipment may be prohibited from parking overnight.



GENERATORS

Generators generally require proper noise shield and are only allowed to park in front of the location house, or houses that have approved this activity.



LIGHTING

Lighting is to be confined to the specific site and not impacting either neighbors or traffic. If shooting at night, lighting should be focused and shielded so as to minimize impact on the local residents.



EXHAUST, GRILLS, & TOILETS

Exhaust-creating equipment, outdoor grills, and toilets, should maintain appropriate distance from residences.



DO NOT INTERFERE WITH CITY SERVICES

Do not interfere with community trash collection, street cleaning, or mail collection.



DO NOT IMPEDE LOCAL BUSINESS

This includes their operations, deliveries, and promotions of upcoming events.



SMOKING PROHIBITED

Smoking is generally prohibited everywhere except for your filming location, and due to fire hazard in some locations smoking is entirely prohibited.



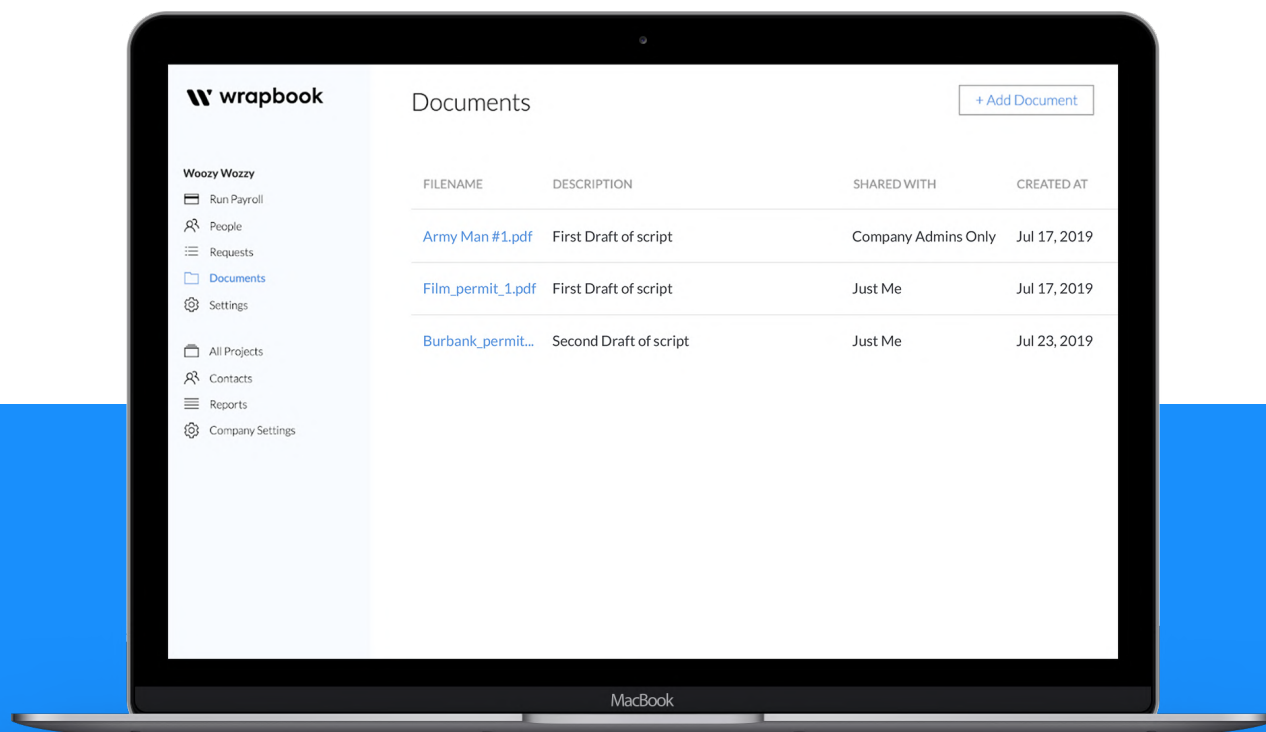
TRASH REMOVAL

Trash must be promptly removed at the end of each production day.



FILMLA MONITORS & MUNICIPAL PERSONNEL

Depending on your location and permitted activities a FilmLA Monitor may be required, as may Law Enforcement, Fire Department, or other municipal personnel.



From LA film permits to COIs to budgets, store all of your important production documents in your **Documents Tab** on your Wrapbook profile. Easily share your documents with your entire production or select crew.

SPECIFIC INSURANCE REQUIREMENTS BY LOCATION

However, each municipality has their own rules which you should abide by:

01 CITY OF LOS ANGELES

If using any of the following properties, the corresponding General Liability requirement applies:

- Department of Water and Power (DWP): \$2M/2M
- Harbor Department: \$3M/3M
- California State University Auxiliary Services (UAS): \$2M/2M
- Aircraft: \$5M/5M

02 COUNTY OF LOS ANGELES

If using aircraft, GL of \$5M/5M is required.

03 CITY OF DIAMOND BAR

No special requirements.

04 CITY OF FULLERTON

No special requirements.

05 CITY OF GARDENA

No special requirements.

06 CITY OF INDUSTRY

No special requirements.

07 CITY OF LA HABRA HEIGHTS

If using aircraft or pyrotechnics, GL of \$5M/5M is required.

08

CITY OF MONTEREY PARK

If using aircraft, GL of \$5M/5M is required.

09

CITY OF PALMDALE

General Liability of \$1M/2M, Auto Liability \$1M, Workers Comp. If using aircraft or pyrotechnics, GL of \$5M/5M is required.

10

CITY OF LANCASTER

General Liability of \$1M/2M, Auto Liability \$1M, Workers Comp. If using aircraft or pyrotechnics, GL of \$5M/5M is required.

11

CITY OF SAN DIMAS

If using aircraft, GL of \$5M/5M is required.

12

CITY OF NEWPORT BEACH

If using aircraft, GL of \$5M/5M is required.

13

CITY OF SANTA MONICA

If using aircraft, GL of \$5M/5M is required.

Santa Monica also does NOT require a permit if filming on private property, and confining all equipment/vehicles to private property as well.

14

CULVER CITY

No special requirements.

15

CITY OF SOUTH GATE

If using aircraft, GL of \$5M/5M is required.

16

CITY OF VERNON

General Liability of \$1M/2M, Auto Liability \$1M, Workers Comp. If using aircraft or pyrotechnics, GL of \$5M/5M is required. If filming in LA County Flood Control or Army Corp properties, production companies must contact the appropriate department/ agencies to obtain permission to film, which will be added to the permit.

NEIGHBORHOOD RULES

Los Angeles is full of distinct neighborhoods, from busy business districts to small communities nestled along a single winding road. While every one of them has their own charms (and requirements), they all share a few requirements in common.

Above all, the biggest requirement when filming in LA's neighborhoods is *don't assume*. Some communities only allow film production for just a few weeks out of the year, while others may be perfect, but may be difficult to access with your production vehicles. So don't get your heart set on a location until you communicate with your FilmLA Production Coordinator to see if it is available.



01 WESTSIDE

[Abbot Kinney Blvd. \(Venice Beach\)](#)

Must contact the Abbot Kinney Merchant Committee, weekend and holiday filming generally prohibited.

[Bel Air](#)

Must contact the Bel Air Association, cast/crew feeding must take place out of public view.

[Brentwood Park](#)

Must contact the Brentwood Park Homeowners' Association, weekend and holiday filming generally prohibited, cast/crew feeding must take place out of public view.

[Holmby Park](#)

Must contact the Holmby Westwood Property Owners Association, all trailers must be run off one central generator, vehicles may not have engines running when parked.

[Pacific Palisades](#)

Weekend and holiday filming generally prohibited, cast/crew feeding must be kept out of public view.

[Venice](#)

Weekend and holiday filming generally prohibited, traffic control on all area streets limited to two minutes, filming the “Venice” sign in lights requires approval of the Venice Chamber of Commerce.

[Westwood Village](#)

Cast/crew parking not permitted on area streets or the Broxton garage, feeding of cast/crew must take place on private property and not affect area businesses.

02 WESTSIDE STREETS

[Angelo View Drive & Davies Drive Area](#)

Only 15 filming days allowed per year, though still photo shoots and productions of fewer than 15 people and no generator may not be subject to this limitation.

[Mapleton Drive & Charing Cross Road](#)

Only 25 filming days filming allowed per year. Cast/crew feeding must take place on private property.

[North Carmelina Avenue: Sunset to N. Cliffwood](#)

Weekend and holiday filming generally prohibited, cast/crew feeding must take place out of public view.

[Washington Boulevard: Pacific to Washington Pier](#)

Strongly recommended to use parking in the Washington lot at the end of Washington Blvd.

[Venice Blvd.: Venice to Centinela](#)

Exterior weekend filming generally prohibited.

03

THE VALLEY

[Bosque Drive Area](#)

Production equipment on area streets limited to 7 vehicles.

[Colfax Meadows Area](#)

Base camp must be specified on permit, generators with proper noise shield shall only park in front of the location house (or houses that have approved this activity).

[Ethel Avenue Area](#)

Weekend filming generally prohibited, only one filming day permitted per production company, with one day setup and one day striking. Cast/crew feeding must be kept out of public view.

[Monteria Estates \(Northridge\)](#)

Only 20 days filming days permitted per year, with just 6 days extending to midnight (unless approved by majority of residents); lighting must be contained on property and not impact any of the surrounding properties, if parking in dirt lot a water truck is required (to suppress dust).

[Toluca Lake](#)

Must contact Toluca Lake Homeowners' Association, cast/crew must be shuttled to filming locations (only vehicles listed on the permit are allowed to park), sidewalks must be kept clear at all times, neighborhood [special Conditions](#) must be attached to cast/crew call sheets, cast/crew feeding must take place out of public view.

04 **THE VALLEY STREETS**

[Louise Ave. & Rancho St.](#)

Parking only allowed in two certain areas.

[Moorpark St. & Forman Ave.](#)

Only one permit issued for a specific location per month, max four for the area for the month. Cast/crew feeding must take place on private property.

[Orion Ave.](#)

Filming limited to one production company per day, weekend and holiday filming generally prohibited.

[Scadlock Ln.](#)

Cast/crew feeding must be kept from public view.

[Sleepy Hollow Ln. \(Tarzana\)](#)

Parking on Ellenita Ave. limited to essential vehicles only, driveways must not be used for vehicle turnarounds.

[White Oak Ave.](#)

No additional requirements.

[Wilbur Ave. \(Ventura to Linnett\)](#)

Parking on Wilbur Ave. limited to essential vehicles only, driveways must not be used for vehicle turnarounds, LAPD officer required on weekdays during the school year, weekend filming generally prohibited, cast/crew feeding must be kept out of public view.

05 SOUTH L.A. & SOUTH BAY

[Ladera Heights](#)

Must contact Ladera Heights Civic Association (LHCA), weekend/holiday filming generally prohibited, prep and strike days must be included on permit, cast/crew feeding must be kept out of public view.

[Leimart Park Business District](#)

Must notify the Executive Director of Community Build, Saturday & holiday filming generally prohibited, must submit merchant signatures & a parking plan at least 4 days in advance for permit.

[San Pedro Business District](#)

Must notify Chamber of Commerce, exterior holiday filming generally prohibited.

[Westchester Business District](#)

Must coordinate parking with Westchester Business Association and Westchester Parking Lots, must submit merchant signatures & a parking plan at least 4 days in advance for permit, cast/crew feeding must be kept out of public view.

06 LOS ANGELES COUNTRY

[Acton](#)

Production companies encouraged not to exceed 1/2 load except in special circumstances, large trucks and production vehicles prohibited from unpaved roads, closures on Soledad Rd. prohibited at certain points in morning and afternoon.

MID-CITY & HOLLYWOOD AREA

[Desmond Estates Rd. Area](#)

Use of Dept. of Recreation and Parks vacant lot may require a walkthrough with FilmLA Production Coordinator to ensure compliance.

[The Grove](#)

All filming should be on-site only unless a separate permit is obtained for filming in public right-of-ways, crew must be less than 50 persons and audience less than 200 persons, adequate security must be provided. No adult entertainment allowed.

[Hancock Park](#)

Notification must be given to the Homeowners' Association, weekend/holiday filming generally prohibited, cast/crew feeding must be kept out of public view, sidewalks must be kept clear at all times.

[Hollywood / Crescent Heights Area](#)

Equipment vehicles must be parked on private property, notification and police oversight may not apply to still photography permits involving fewer than 15 people.

[Kinney Heights](#)

Notification must be given to four different Block Clubs, if street cleaning disrupted the production must clean the street, several specific parking restrictions.

[Larchmont Blvd.](#)

Notification must be give to The Larchmont Boulevard Association, Inc., sidewalks must remain unobstructed at all times other than during actual filming.

[Lafayette Square](#)

notification must be given to the Neighborhood Association, weekend/holiday filming generally prohibited, prep/strike days must be included on permit and generally prohibited on weekends.

[Mount Olympus](#)

Only 6 production vehicles permitted in the area, base camp must be located outside of the area.

[The Oaks at Los Feliz](#)

Notification must be given to The Oaks Homeowners' Association, generators with proper noise shield shall only park in front of the location house, or houses that have approved this activity, cast/crew feeding must be kept out of public view.

[Raleigh Studios](#)

No parking on Clinton Ave.

[Spaulding Square](#)

Notification must be given to Neighborhood Association, cast/crew feeding must be kept out of public view.

[Waverly Dr. Area \(Los Feliz\)](#)

Notification must be given to Los Feliz Improvement Association, max of 10 filming days in one location per year and max 40 days in Waverly Dr. area, weekend/holiday filming generally prohibited, max of 2 equipment vehicles (2 trucks or 1 truck and generator) allowed on area streets.

[West Adams Aves.](#)

Must contact The West Adams Avenues Association, weekend/holiday filming generally prohibited, notifications must be in English and Spanish, no coning off parking spaces before permitted film activities (this includes the night before the shoot), cast/crew feeding must take place on private property.

[West Adams Heights / Sugar Hill](#)

Must contact the Homeowners' Association, prep/strike days must be included on permit and may not take place on weekend unless otherwise allowed, weekend/holiday filming generally prohibited, if street cleaning is disrupted the production is responsible for cleaning the street.

[Western Heights](#)

Must contact Homeowners' Association, weekend/holiday filming generally prohibited, prep/strike days must be included on permit and cannot take place on weekend unless otherwise permitted, cast/crew feeding must be kept out of public view.

[Wilshire Ebell Theater](#)

Parking permitted in United Methodist lot, as well as Wilshire Ebell East Lot and West Lot (the latter is also available for base camp).

[Windsor Square](#)

Must contact Homeowners' Association, weekend/holiday filming generally prohibited, cast/crew feeding must be kept out of public view, sidewalks must be kept clear at all times.

08

MID-CITY AND HOLLYWOOD STREETS

[Franklin Ave & Normandie Ave.](#)

Parking of production vehicles/equipment prohibited in certain areas, cast/crew feeding must be kept out of public view.

[5200 W. Adams Blvd.](#)

Production vehicles/equipment requires LAPD officer and is limited to certain streets, cast/crew feeding must be kept out of public view.

[Harvard Blvd.](#)

Must contact First AME Church, overnight & weekend parking of equipment is prohibited, weekend filming or filming for more than five consecutive days is generally prohibited, driveways may not be used as turnarounds, catering must be on private property.

[1500-1600 N. Orange Grove Ave.](#)

Catering not allowed in public right-of-way (street, parkway, or sidewalk).

[N. Vermont Ave. \(Franklin to Prospect\)](#)

Equipment parking and posting on Vermont Ave. requires filming survey.

[Victoria Ave. \(Country Club to Pico\)](#)

must contact current community representative, cast/crew feeding must be kept out of public view.

09 ALTADENA & PASADENA

[Altadena Town & Country Club \(ATCC\)](#)

No traffic blockage or parking of production-related equipment/ vehicles on Country Club Dr. No filming except for establishing shots of Clubhouse entrance, no later than 8pm, using no more than two vehicles, and a total of seven cast and four crew.

[Chapman Woods](#)

Must contact Homeowners' Association, weekend/holiday filming generally prohibited, cast/crew feeding must be kept out of public view.

[The Meadows in Altadena](#)

Filming and parking of production equipment/ vehicles prohibited in areas Canyon Crest Road (companies must stake-bed their equipment to the filming location and park on private property), smoking prohibited due to dry conditions.

[Pasadena Glen Area](#)

Parking on Vosburg St. limited to one generator and one stake bed or cube truck, smoking prohibited due to dry conditions.

10 ALTADENA STREETS

[Chaney Trail & Alzada Dr.](#)

Posting/parking in LA County Flood Control Basin requires wetting down (to suppress dust) and production trucks cannot idle, driving shots may require filming survey.

[Homewood Dr. \(Tanoble W. to end\)](#)

Weekend/holiday filming generally prohibited, area streets may not be coned off.

[Layton St. & Crary St.](#)

Max of three production trucks permitted on Crary St., equipment prohibited on Layton St., generators must be on private property.

[2150 Mendocino Ln.](#)

Trailers/motorhomes/honeywagons must run off a single generator, must contact Kengary Lane Association in order to use Kengary Ln., all production equipment/vehicles (including cast/crew vehicles) must be minimum 75 feet from the property line of the houses on Midlothian Dr.

[Rubio St. \(Maiden to Holliston\)](#)

Weekend/holiday filming generally prohibited, generators should be placed as far as possible from nearby residents.

11

EASTSIDE / DOWNTOWN LOS ANGELES

[Angelino Heights](#)

Minimal posting for equipment parking only allowed, posting/parking on 1300 generally prohibited unless filming location is on that block.

[The Arts District](#)

Must contact theaters and galleries if filming conflicts with their events, walkie-talkie headsets required between 12am - 6am, do not feed the homeless (though you may give to homeless-feeding charities).

[Downtown Los Angeles](#)

No permits issued for exteriors around Main & Spring and 2nd & 9th during Art Walk (2nd Thursday of the month), generators, grills, and toilets must be a minimum of 50ft from residential windows or entrances, lighting should focus on location and should never be directed into oncoming traffic.

[Echo Park & Elysian Park](#)

Notifications must be in English and Spanish, only Honey Wagon or Executive type portable restrooms allowed, and must be at least 100ft from any food establishments, walkie-talkies must have headsets between 7pm - 7am, may have to adjust filming dates based on a community calendar.

[Los Angeles City Hall](#)

Requires tech scout with General Services representative, detailed written plan for filming, must provide badges for cast/crew, for interiors must use layout board and wall protection, only water allowed inside, no gunfire, smoke, or use of house power, requires LAPD officers and may require LAFD officer.

[Tempe / Beaudry Area](#)

Notifications must be in English and Spanish.

12

EASTSIDE STREETS

[1800-1900 Micheltorena St.](#)

Late night and weekend/holiday filming generally prohibited, catering must be on private property.

[Carroll Ave. \(E. Edgeware to Douglas\)](#)

No more than three production vehicles may be parked on Carroll Ave (a fourth may unload for less than 45 minutes), extraordinary scenes (chases, fights, firearms, explosions, or street closures) are prohibited, weekend/holiday filming expressly prohibited, bullhorns are prohibited, take care with young trees and street lights near the curb.

[225 E. 5th St. \(Former City Fire Station 23\)](#)

Night filming requires approval of Department of Transportation, production must not hinder loading or unloading of area merchants.

Lebanon St. (6th to 7th)

Blocking of loading areas, entrances, or exits is prohibited; LAPD officer required for all film / still photo shoots on Lebanon St.

1200 Block of W. 7th St.

All loading zones must be kept open, generators must be located in areas of minimal disturbance, sidewalks must be kept clear at all times.

LA SCHOOL DISTRICTS

Filming in one of Los Angeles's seven School Districts requires a license agreement with the particular school district (available through FilmLA) in addition to your film permit.

i PLEASE NOTE

When filming in a school, production activities must be secondary and must not disrupt any school institutional programming.



SCHOOL DISTRICT INSURANCE REQUIREMENTS

- 01 **BURBANK UNIFIED SCHOOL DISTRICT**
General Liability of \$1M/2M, Auto Liability \$1M, Workers Comp.
- 02 **GLENDALE UNIFIED SCHOOL DISTRICT**
General Liability of \$1M/2M, Auto Liability \$1M, Workers Comp.
- 03 **LOS ANGELES COMMUNITY COLLEGE DISTRICT**
General Liability of \$5M/5M, Auto Liability \$1M, Workers Comp.
- 04 **LOS ANGELES UNIFIED SCHOOL DISTRICT**
General Liability of \$1M/2M, Auto Liability \$1M, Workers Comp.
- 05 **LA CAÑADA UNIFIED SCHOOL DISTRICT**
General Liability of \$1M/2M, Auto Liability \$1M, Workers Comp.
- 06 **LAWNDALE ELEMENTARY SCHOOL DISTRICT**
General Liability of \$1M/2M, Auto Liability \$1M, Workers Comp.
- 07 **NORWALK – LA MIRADA UNIFIED SCHOOL DISTRICT**
General Liability of \$1M/2M, Auto Liability \$1M, Workers Comp.



LA AIRPORTS

FilmLA facilitates filming inside of two of Los Angeles airports. Hollywood Burbank Airport is not included, as it falls under the jurisdiction of Burbank, which exists outside of the FilmLA system.

PLEASE NOTE

Due to the logistical hurdles of airports, many productions shoot on pre-made airplane and airport film sets, like [Air Hollywood](#).



LA AIRPORT REQUIREMENTS

01 LAX

Terminal (GL 1M/1M), airfield (10M/10M). Tech scout required, with LAX, LA Fire Department, and other staff present. In Secure areas requires background checks for cast and crew

02 VAN NUYS AIRPORT

Terminal (GL 1M/1M), airfield (2M/2M). Restrictions on the height of film equipment, no filming on runways, and all filming activities must take place within the boundaries of a tenant's leasehold.



LA BEACHES

All of Los Angeles's beaches have their own distinct requirements. However, each share a few requirements:

i USEFUL LINKS

Visit these links for more details about [general beach guidelines](#), [beach parking](#), and scheduling water scenes with the [U.S. Coast Guard](#).



GENERAL REQUIREMENTS

01 INSURANCE

They share FilmLA's basic insurance requirements (General Liability of 1M/1M with a Waiver of Subrogation, and Workers Compensation)

02 HOURS OF OPERATION

Most beaches are open from 7am - 10pm, though some close at dusk. Filming outside of these hours requires special permission, and in some locations may not be possible.

03 PEDESTRIAN WALKWAY

Keep equipment at least 15 feet away from the pedestrian walkway

04 BIKE PATH

Keep equipment at least 10 feet away from the bike path, and fly any cables over the path

05 SEAWALL

In general, keep heavy vehicles at least 15 feet away from the seawall

06 VEHICLES

In most cases, it is not allowed to have vehicles on beach turf without express approval from the Los Angeles Department of Beaches and Harbors (DBH).



SPECIFIC BEACH REQUIREMENTS

BURTON CHACE PARK

No filming on summer weekends, or on Wednesdays. No catering on park property.

DAN BLOCKER BEACH

Cast/crew must be 10 people or fewer and equipment must be handheld. All equipment must be walked down to the beach.

DOCKWEILER BEACH

Driving scenes allowed between October and April. Only still photography is allowed on the grassy knoll at entrance.

MALIBU SURFRIDER BEACH

Cast/crew must be 10 people or fewer and equipment must be handheld. Only one 40-foot truck allowed in lot (and no trucks allowed over 40 feet).

MANHATTAN BEACH

Dual permit required with the City of Manhattan Beach.

MARINA DEL REY & PROMENADE BEACHES

No directional signs may be posted, no filming on weekends, certain filming activities may require a sheriff or lifeguard.

MOTHERS BEACH

Under the auspices of Marina Del Rey. No directional signs may be posted, no filming on weekends, certain filming activities may require a sheriff or lifeguard.

NICHOLAS CANYON BEACH

Cast/crew must be 10 people or fewer and equipment must be handheld. No trucks larger than 40 feet allowed in lot.

POINT DUME BEACH

No admittance to the parking lot prior to 7am. No trucks larger than 40 feet allowed in lot.

REDONDO BEACH

Dual permit required with the City of Redondo Beach. Driving scenes may be permitted, with permission, on the pedestrian walkway.

ROYAL PALM / WHITE POINT BEACHES

Filming on the bluff is on a case-by-case basis and is affected by erosions and slides. Walkthrough with lifeguard required for all activities.

TOPANGA BEACH

Cast/crew must be 15 people or fewer and equipment must be handheld. No parking or picture vehicles at lower parking lot or access road. No filming on bluff.

TORRANCE BEACH

Dual permit required with the City of Torrance.

VENICE BEACH

Production companies are permitted to launch personal motorized watercraft (not vessels) from October through March, provided they remain 300 yards offshore. No trucks larger than 40 feet in lot.

WILL ROGERS STATE BEACH

Exceptions can be made for playback or amplified sound after 10pm, if properly cleared by a FilmLA Coordinator.

ZUMA BEACH

Driving scenes may be permitted, with permission, on the pedestrian walkway.

HOW MUCH DOES A FILM PERMIT COST

A Los Angeles film permit has several different costs associated with it, which vary depending on your locations and the extent of your production activities.

Your FilmLA Production Coordinator can work with you and your budget to meet the needs of your production while minimizing these fees. Some of the fees associated with your film permit are:



01 APPLICATION FEE

The application fee for a motion photography with FilmLA is \$699 per permit. One permit generally covers production activities for up to ten locations for up to two continuous weeks. If you're looking for still photography permit in Los Angeles, the service is cheaper for a basic permit at \$66 per permit.

 Whether you're getting a film or still photography permit in Los Angeles, the application fee is non-refundable.

02 RIDER FEE

A “rider” is required whenever a change is made to a permit after it has been finalized. For motion photography a rider costs \$111, and a rider for still photography permit costs \$22. Rider fees are non-refundable.

03 NOTIFICATION FEE

FilmLA works to notify the local community on your behalf regarding your production activities. The minimum notification fee is \$173 per location, though it may increase depending on the location and the notification radius.

04 FILMLA MONITOR

Depending on your permit, you may require a FilmLA Monitor. FilmLA Monitors ensure compliance with permit terms from the production company as well as on-set mediation between production companies and the local community. If required, FilmLA Monitors earn \$32.50/hour, and earn overtime if working more than 8 hours.

05 REDUCED STUDENT & NON-PROFIT FEES

If you are a student or certified non-profit organization, you may qualify for special reduced application and notification fees. To see if you qualify, inquire at info@filmla.com.

Burbank Film Permits

Some of the most iconic institutions and houses in Los Angeles don't actually fall within FilmLA. The Cities of Burbank and Beverly Hills operate their own separate film permit processes.



DO I NEED A FILM PERMIT TO SHOOT IN BURBANK?

Yes, although there is one exception. Everyone doing commercial film production and still photo shoots in Burbank requires a permit *except* if you are shooting in a certified sound stage.

If you aren't sure if where you're shooting is certified, reach out to the Traffic Bureau of the Police Department at (818) 238-3105. You can learn more about Burbank's filming requirements [on their website](#).



INSURANCE REQUIREMENTS

- 01 General Liability of 2M per occurrence. Since the highest GL coverage for many insurance companies is 1M occurrence / 2M aggregate, your insurance company may need to add an Umbrella/Excess Liability policy of 1M occurrence / 1M aggregate to meet these limits
- 02 Automobile Liability of 1M per occurrence.
- 03 Workers Compensation of 1M per incident

GENERAL GUIDELINES

- 01 Film permits are generally issued for filming from the hours of 7am - 10pm. Any filming outside of these standard hours requires special permission.
- 02 Traffic lane and street closures are generally not permitted other than for three-minute intermittent traffic control. However, it may be possible to close a lane of traffic with special permission from the Traffic Bureau.
- 03 Film equipment is prohibited from parking overnight in residential areas.
- 04 Stunts involving vehicle crashes or chases are only permitted with the official approval of the Traffic Bureau Commander.

HOW TO GET A PERMIT

You can get a film permit in Burbank in four easy steps:

STEP 1

Contact the Traffic Bureau of the Burbank Police Department no less than 72 hours before the start of filming. The Traffic Bureau's phone number is (818) 238-3105.



STEP 2

Complete the [film permit application form](#). You can apply via email, fax, or or apply online a minimum of 72 business hours before the start of filming.



STEP 3

Contact affected City Departments. If your production will affect any city departments (City Hall, Public Works, etc.), each department must be contacted by a production representative for departmental approval.



STEP 4

Appear in person at the Police Traffic Bureau. Here you will be able to sign and pay appropriate fees before filming actually begins.

HOW MUCH DOES A BURBANK FILM PERMIT COST?

Burbank has different costs for standard, student, and nonprofit film permits.

STANDARD FILM PERMIT

\$398

1 to 2 Consecutive
Days

\$707

3 to 7 Consecutive
Days

STUDENT FILM PERMIT

\$25

1 to 2 Consecutive
Days

\$100

3 to 7 Consecutive
Days

NON-PROFIT FILM PERMIT

Fee is *waived* with a copy of your IRS 501(c)3 form. Other fees may apply depending on your production activities.

CITY PERSONNEL

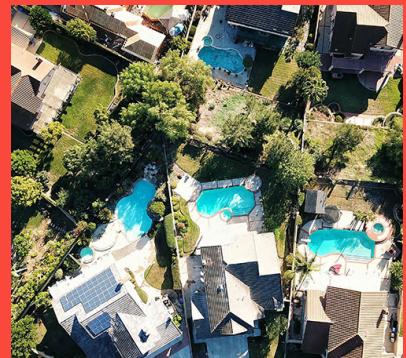
While filming in Burbank doesn't require a FilmLA Monitor, if you are filming on a street or on public property at least one Law Enforcement Officer must be present.

Additionally, whether on public or private property, a Fire Safety Officer is usually required. Finally, if animals are present at the filming location, the Burbank Animal Shelter must be notified.



Beverly Hills Film Permits

Some of the most iconic institutions and houses in Los Angeles don't actually fall within FilmLA. The Cities of Burbank and Beverly Hills operate their own separate film permit processes.



DO I NEED A FILM PERMIT TO SHOOT IN BEVERLY HILLS HILLS

Yes, you'll require a permit on any commercial productions, or any personal productions utilizing commercial equipment or distribution (YouTube is considered commercial).

You can learn more about Beverly Hills' film permitting process [on their website](#).



INSURANCE REQUIREMENTS

Beverly Hills requires General Liability of 1M occurrence / 2M aggregate, as well as Automobile Liability of \$1M (if applicable), and Workers Compensation.

GENERAL GUIDELINES

- 01 Film permits for residential and City park locations are generally issued for the hours between 8am-9pm Monday - Saturday, and 9am-8pm Sunday. Additional hours can be requested, though it requires signatures from a substantial percentage of residents to be approved.
- 02 Film permits for commercial locations of the City are unrestricted, so long as businesses are not adversely impacted.
- 03 The number of film days per residential site is five consecutive days per year, with a max of ten days. This provision can be amended to 20 days with a film survey (film permit fees double for days 10-20).
- 04 Production vehicles, including lighting, must be contained within the location and not affect the surrounding residents. Cast/crew are prohibited from parking on adjacent streets.
- 05 Special effects and amplified sound are prohibited.

HOW DO I GET A FILM PERMIT?

You can get a permit in Beverly Hills by applying online or fax at the Beverly Hills Film & Special Permit Office. If you have any questions, you can call them at (310) 285-2408.

HOW MUCH DOES A FILM PERMIT COST?

Film and Photography permit prices Beverly Hills vary widely, depending on the type and size of your production as well as your shooting location.

i *Permitting fees are charged daily in Beverly Hills, so make sure you plan well in order to have the most efficient shoot possible.*

PERMIT FEES

\$114

Standard permit fee[†]

\$69

Student film permit[‡]

\$180

Permit Rider[°]

[†] Additional fees for permits processed within 48 hours.

[‡] Per permit

[°] For modifications to an existing permit

STANDARD FILM PERMIT

A special rate applies to “Small Scale Film Productions” (cast & crew of 15 or less with max 4 production vehicles, no special effects, no full-size generator (a putt-putt is allowed), and prep/strike occurring on the same day as filming.

\$233

Commercial &
Resident Locations†

\$473

Use of Public Right
of Way

\$593

Civic Center
& City Hall‡

COMMERCIAL AREAS (OTHER THAN RODEO DR. IN BUSINESS TRIANGLE)

\$1,871

Filming

\$159

Filming prep/
strike

\$423

Non-profit
filming

\$204

Small-Scale Still
Photography

\$703

Large-Scale Still
Photography

† Interior/Exterior

‡ Exteriors

COMMERCIAL AREAS ON RODEO DR. IN BUSINESS TRIANGLE

\$2,003

Filming

\$293

Filming prep/
strike

\$501

Non-profit
filming

\$308

Small-Scale Still
Photography

\$763

Large-Scale Still
Photography

RESIDENTIAL AREAS

\$1,605

Filming

\$293

Filming prep/
strike

\$401

Non-profit
filming

\$220

Non-profit filming
prep/strike

\$218

Small-Scale Still
Photography

\$828

Large-Scale Still
Photography

CITY PARKS

\$3,019

Filming

\$293

Filming prep/
strike

\$1,005

Non-profit
filming

\$355

Small-Scale Still
Photography

\$2,930

Large-Scale Still
Photography

CITY/PARK PROPERTY FOR STAGING OR CREW USE

\$264

Small-scale
staging/crew

\$293

Large-scale
staging/crew

CITY BUILDINGS (OTHER THAN THOSE LOCATED AT PARK FACILITIES)

FILMING

\$1,426

Exterior

\$3,860

Interior

\$2,967

Interior/Exterior
(On same day)

\$474

Filming prep/
strike

NON-PROFIT FILMING

\$1,069

Exterior

\$836

Interior

\$2,059

Interior/Exterior
(On same day)

\$473

Small-Scale Still
Photography

\$459

Small-Scale Still
Photography

\$987

Large-Scale Still
Photography

State and National: Beaches, Parks, and Forests

While FilmLA oversees most of the beaches in L.A. County, some beaches, as well as parks, fall under the authority of the State of California. In this case, you may need to apply for an additional permit from the California Film Commission.

To make things even more complicated, some beaches, like Will Rogers State Beach and Point Dume, fall under the authority of *both*! Depending on what part of the beach you are filming, you may have to deal with one, two, or, in the case of a few municipalities, as many as *three* different government entities to get your scene. The good thing is that, with ample time and good communication with your FilmLA Production Coordinator, as well as your insurance broker, you can navigate these waters with ease.



State Beaches & Parks

If you are engaging in commercial production, or personal production using commercial equipment, you generally require a permit. However, the park coordinator has primary authority, not the California Film Commission (CFC). Always call the park coordinator in advance to tell him/her know what you plan to do and when you plan to do it. *The park coordinator will determine whether or not you need a permit.*



WHICH BEACHES AND PARKS ARE STATE BEACHES AND PARKS?

These are the beaches and parks under the authority of the Angeles District of the California Department of Parks and Recreation (and the California Film Commission).

If you're filming in any of them, you may need permitting both from FilmLA as well as the CFC. But remember, always talk to the park coordinator first!

- Castaic Lake State Recreational Area
- Dockweiler State Beach
- Kenneth Hahn State Recreational Area & Baldwin Hills Scenic Overlook
- Long Beach Marine Stadium
- Leo Carrillo State Beach
- Los Angeles State Historic Park
- Los Encinos State Historic Park
- Malibu Creek State Park
- Malibu Lagoon State Beach
- Pio Pico State Historic Park
- Placerita Canyon State Park
- Point Dume (also under FilmLA)
- Point Mugu State Park
- Rio de Los Angeles State Park
- Robert H. Meyer State Beach
- Santa Monica State Beach
- Santa Susana Pass State Historic Park
- Topanga State Park
- Verdugo Mountains
- Watts Towers of Simon Rodia
- Will Rogers State Beach (also under FilmLA)
- Will Rogers State Historic Park



GENERAL GUIDELINES



CONTACT PARK COORDINATOR

This must be done before you submit your permit application, or it risks being declined.



WEEKENDS/HOLIDAYS

Weekend/holiday filming generally prohibited.



HOURS

Basic hours for filming (for simple shoots) are 8am - sunset.
Varies by park and season.



HOW MANY BEACHES/PARKS PER PERMIT

May only be able to apply for one beach or park per permit, as each location has different requirements.



FIRE & DUST

During dry conditions a water truck may be required and smoking may be prohibited.



RAINED OUT

If your shoot day is rained out, some parks staff will let you choose another day without charging.



NO CAMPING

Production personnel may not camp out at Park campgrounds.



STATE PERSONNEL

Depending on your production activities and size, park staff, California Highway Patrol, lifeguards, or ecologists may be required to monitor your production.

INSURANCE REQUIREMENTS

California State insurance requirements are similar to FilmLA's, but not quite as extensive. They require:

- 01 General Liability of 1M occurrence / 1M aggregate, listing the State of California as Additional Insured.
- 02 Automobile Liability of 1M/1M, if applicable.
- 03 Workers Compensation Liability, if applicable (if not applicable, [submit this waiver](#)).
- 04 If using UAS or drones, must carry 2M UAS Liability.
- 05 If using fixed-wing aircraft or helicopters, requires 5M Liability coverage.
- 06 Like FilmLA, the State of California requires an Additional Insured Endorsement from your insurance broker (usually a free coverage), but does not require a Waiver of Subrogation.



USEFUL LINKS

If you are a student and using your university's insurance, you'll need to submit a [Student Certification Letter](#).

SIMPLE VS. COMPLEX SHOOTS

Different requirements apply to “simple” and “complex” shoots. The California Film Commission determines your shoot to be simple or complex utilizing the following criteria:

SIMPLE

- 01 Max of 14 people, including all cast/crew, extras, and vendors
- 02 Filming occurs during regular hours (8am - sunset in most locations)
- 03 Equipment is entirely hand-held, with “hand-held” defined as something one average-sized person can carry (a tripod would likely be hand-held, whereas a dolly would likely not be)

COMPLEX

- 01 15 or more people
- 02 Filming outside of the standard hours (8am - sunset in most locations)
- 03 Stunts, special effects, animals, drones, etc.
- 04 Aquatic activities
- 05 Filming in state historic parks, state preserves, fire hazard areas, environmentally sensitive areas, near park roads open to the public, or driving vehicles on park service roads not open to cars.

HOW TO GET A PARKS PERMIT FOR STATE PARKS & BEACHES

Provided you have at least four days before filming starts, you can get a parks permit in just 4 easy steps:

STEP 1

Call the Park Film Coordinator for the park or beach where you would like to film. For the Angeles District, contact Melony Light at 818.880.0358. In the Angeles District, you also will need to pay a non-refundable credit card authorization. (For other districts, you can find your coordinator by [looking up the park](#)).

- Permits can be requested for multiple days, so make sure you confirm the beach or park is available for the length of your shoot.

STEP 2

Once you confirm that the beach or park is available, complete the California Film Commission [online permit application](#) at least four days before filming starts.

Be as specific as possible, listing all dates, arrival and departure times, numbers of production personnel, as well as a description of your production activities, especially activities like special effects, stunts, and drones.



STEP 3

At this point, the beach or park is considered booked. The park will issue a “DPR245A” form, and the CFC will send you an invoice for your permit, as well as for any anticipated monitor fees (if final costs are less than anticipated, you will receive a refund at the conclusion of the shoot).

STEP 4

You can pay by credit card or by other pre-arranged method and the CFC and State Parks will issue your permit.

HOW MUCH DOES A PARKS & BEACHES PERMIT COST?

Parks and beaches charge cost-recovery fees in order to allow filmmaking activities. Apart from parking, these fees are collected by the California Film Commission. However, these fees are the parks' and beaches' fees entirely, and the CFC provides its services at no cost. The fees associated with Parks (and Beaches) Permits are as follows:

REVIEW FEE (IN ORDER TO BOOK THE PARK OR BEACH), COLLECTED BY THE CFC

\$65/day

Simple shoots

\$200/day

Complex shoots

PARKING FEES, COLLECTED BY THE PARK OR BEACH

\$8-\$12

Fee varies (Per vehicle or parking space)

MONITOR FEES, MIN. 6 HRS. "PORTAL TO PORTAL"

\$79/hr

Peace Officers / Rangers

\$56/hr

Maintenance

\$46/hr

Administration

\$39/hr

Lifeguard

\$29/hr

Park Aide

\$0.76/mile

Mileage for monitors

CALIFORNIA HIGHWAY PATROL (CHP) FEES, MIN. 4 HRS.

OFFICERS

\$97.43/hr

\$101.30/hr

With motorcycle

SERGEANTS

\$118.52/hr

\$123.24/hr

With motorcycle

MILEAGE

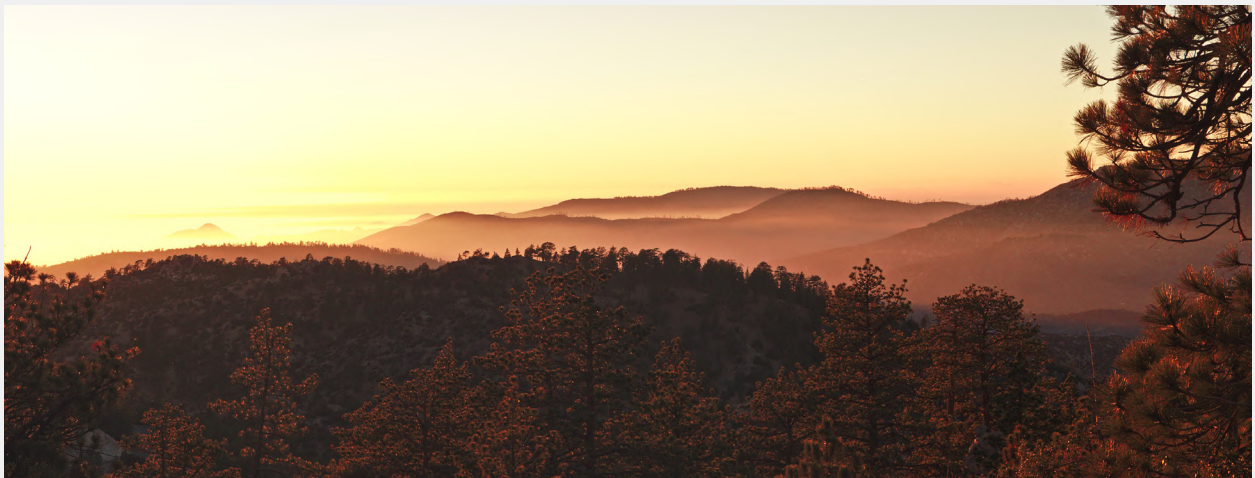
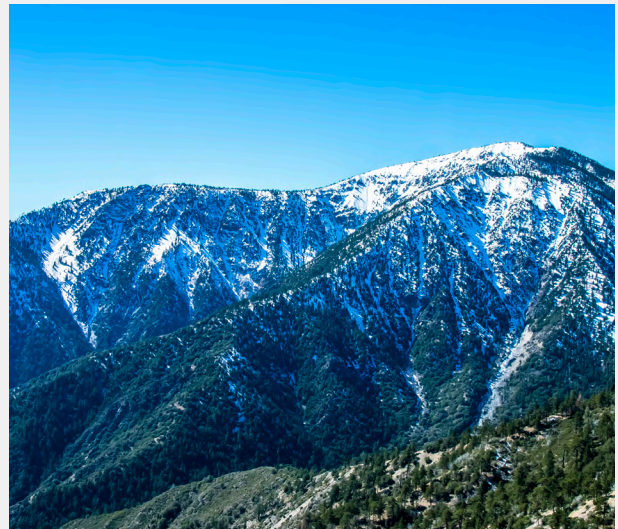
\$1.04/mile

\$1.43/mile

With motorcycle

Angeles National Forest

So far we've talked about city and county authority in Los Angeles, overseen by FilmLA, as well as state authority, run by the California Film Commission. Filming in the Los Angeles National Forest requires one more layer of authority: the federal government.



DO I NEED A FILM PERMIT TO FILM IN THE ANGELES NATIONAL FOREST?

Yes, you need a permit for any commercial film or still photography productions in the Angeles National Forest (remember: personal productions utilizing commercial equipment, as well as productions meant for platforms like YouTube, are considered commercial).

Depending on where specifically you are shooting, you may need permits for the city and state as well.

If you are a student, you will still need a permit, but the fees may be waived.



HOW DO I GET A FILM PERMIT FOR THE ANGELES NATIONAL FOREST?

Filming in the Angeles National Forest requires planning ahead. For one, it can take *two weeks advance notice to process a permit*, so start early. Furthermore, filming in national forests also may involve city, county, or state roads, which may require coordination with FilmLA, the California Film Commission, and/or local municipalities.

Apart from that, you can get a permit for the Angeles National Forest in 3 easy steps:



STEP 1

Consult the National Forest for any additional information, including forest policies, closures, and your production plans

The Angeles National Forest contact is:

Justin Seastrand, Natural Resource Specialist
Angeles National Forest
701 N. Santa Anita Ave.
Arcadia, CA 91006
(626) 574-5278



STEP 2

Fill out a permit request, and fax, email, or return it in person. In addition to your permit application, you'll need:

- A detailed map showing proposed areas for production and staging,
- A Certificate of Insurance (COI) (available from your insurance broker)
- An Additional Insured Endorsement (available from your insurance broker)




STEP 3

Once approved, and prior to the first day of filming, go to the supervisor's office to pay by check (no cash) and collect your permit!

INSURANCE REQUIREMENTS

To film in the Angeles National Forest, you have to have insurance. You'll need coverage of:

- 01 General Liability of 1M occurrence / 1M aggregate
- 02 General Liability of 5M/5M *if aircraft are involved*
- 03 An Additional Insured Endorsement, in addition to a standard Certificate of Insurance

 A common mistake: your COI and AI Endorsement should list "United States Government" (not "US Forest Service") as additional insured. A good practice to send your insurance broker any location requirements so they can tailor a policy to the Forest's specifications and avoid delays.

HOW MUCH DOES AN ANGELES NATIONAL FOREST PERMIT COST?

The Angeles National Forest charges “use” or “permit fees” (a daily fee based on the size of cast and crew present) as well as a non-refundable “cost recovery fee” (which covers Forest Service personnel and administration). The fees are as follows:

COST RECOVERY FEES

\$109

1-8 hours

\$386

8-24 hours

\$726

24-36 hours

\$1,040

36-50 hours

Full[†]

50+ hours

[†] Actual costs of personnel and administration

PERMIT FEES

1-10 PEOPLE

\$50/day

Still Photography

\$150/day

Film

11-30 PEOPLE

\$150/day

Still Photography

\$200/day

Film

31-60 PEOPLE

\$250/day

Still Photography

\$500/day

Film

60+ PEOPLE

\$250/day

Still Photography

\$600/day

Film

STUDENT FEES

Student filmmakers are required to pay a minimum cost-recovery fee. However, the fee may be waived if you present a letter on school letterhead stating that the film is a requirement for class and is not of commercial value.

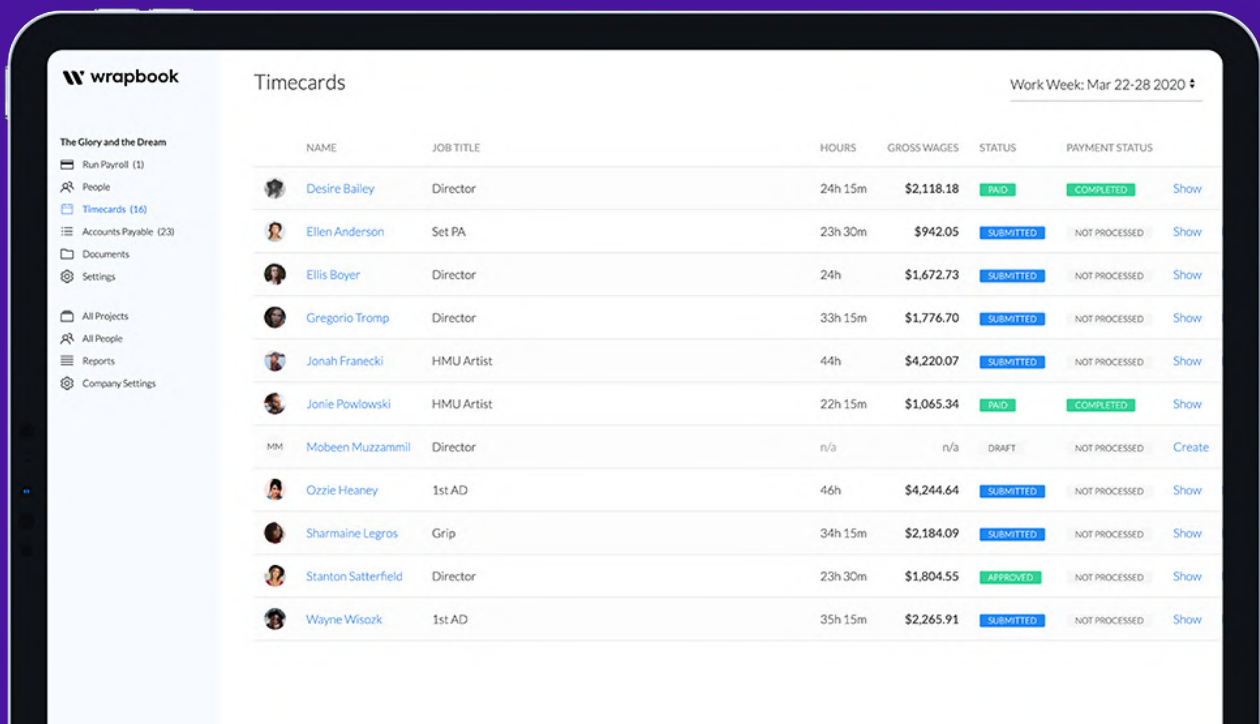
Next Steps

Getting a film permit in and around Los Angeles can be complicated and expensive. It can be especially frustrating if you don't properly budget your money and time (much like filmmaking itself!). However, good communication with your FilmLA Production Coordinator and your insurance broker can make the permitting process a lot smoother.

At [Wrapbook](#), we listen to our clients and provide them with insurance coverage that meets FilmLA's requirements at minimal cost. Our insurance brokers have a background in production, whether as producers or assistant directors, so we are familiar with the unique challenges our filmmaking clients face.

In fact, wanting to help filmmakers navigate these waters is why we became insurance brokers in the first place.

Whether you need an insurance policy or cutting-edge digital payroll services, Wrapbook has you covered. Get a [free insurance quote](#), or [talk with a specialist today!](#)



The screenshot displays the 'Timecards' section of the Wrapbook application. The interface includes a sidebar with navigation options and a main table listing crew members. The table columns are: NAME, JOB TITLE, HOURS, GROSS WAGES, STATUS, and PAYMENT STATUS. The data is as follows:

NAME	JOB TITLE	HOURS	GROSS WAGES	STATUS	PAYMENT STATUS
Desire Bailey	Director	24h 15m	\$2,118.18	PAID	COMPLETED
Ellen Anderson	Set PA	23h 30m	\$942.05	SUBMITTED	NOT PROCESSED
Ellis Boyer	Director	24h	\$1,672.73	SUBMITTED	NOT PROCESSED
Gregorio Tromp	Director	33h 15m	\$1,776.70	SUBMITTED	NOT PROCESSED
Jonah Franecki	HMU Artist	44h	\$4,220.07	SUBMITTED	NOT PROCESSED
Jonie Powlowski	HMU Artist	22h 15m	\$1,065.34	PAID	COMPLETED
Mobeen Muzzammil	Director	n/a	n/a	DRAFT	NOT PROCESSED
Ozzie Heaney	1st AD	46h	\$4,244.64	SUBMITTED	NOT PROCESSED
Sharmaine Legros	Grip	34h 15m	\$2,184.09	SUBMITTED	NOT PROCESSED
Stanton Satterfield	Director	23h 30m	\$1,804.55	APPROVED	NOT PROCESSED
Wayne Wisozk	1st AD	35h 15m	\$2,265.91	SUBMITTED	NOT PROCESSED



ABOUT WRAPBOOK

Wrapbook is a one-stop solution for entertainment payroll and production insurance. Using its state-of-the-art platform, you can onboard your cast and crew, collect timecards, expenses, and kit fees, and run payroll.

Wrapbook only charges a fraction of your payroll, so you can put more money back into your projects. And since Wrapbook's made draws from the latest union regulations and labor laws, all your payments are 100% compliant for no additional cost.

[Click here to see a Demo of Wrapbook in action.](#)

If you found this e-book helpful, check out our other resources at the [Wrapbook blog](#).